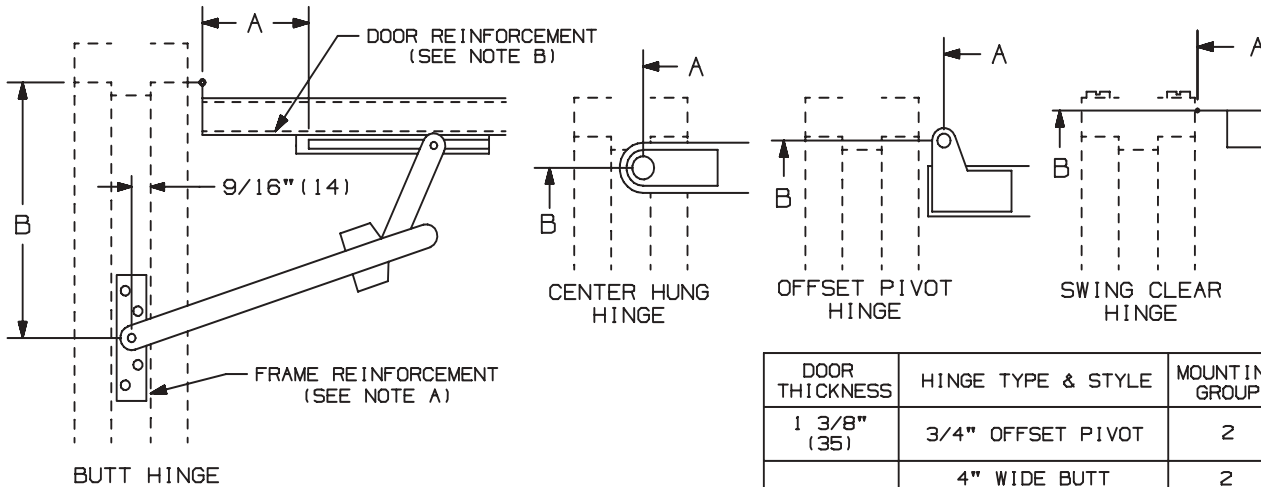


OVERHEAD HOLDERS OR STOPS MUST BE INSTALLED BEFORE CLOSERS

1. A. DETERMINE THE MOUNTING BEING USED FROM ILLUSTRATION BELOW.
- B. SELECT MOUNTING GROUP NUMBER FROM CHART BELOW. MOST CONTINUOUS HINGES ARE GROUPED WITH 4 1/2" WIDE BUTT OR 4 1/2" SWING CLEAR HINGE.
- C. USING THE MOUNTING GROUP NUMBER AND THE OVERHEAD HOLDER OR STOP SIZE AND THE DEGREE OF OPENING DESIRED, FIND "A" AND "B" DIMENSIONS FROM CHARTS STARTING ON PAGE 3. FOR DEAD STOP ADD 13/16" (21) TO THE "A" DIMENSION FROM THE CHART.



81 SERIES
PLAN MOUNTING VIEW
LH SHOWN

NOTES:

- A. HOLLOW METAL FRAMES SHOULD BE PROPERLY REINFORCED WITH A 3/16" (5) MINIMUM THICKNESS BY 12" (305) MINIMUM LENGTH PLATE.
- B. HOLLOW METAL DOORS SHOULD BE PROPERLY REINFORCED WITH A 3/16" (5) MINIMUM THICKNESS BY 2 1/2" (64) MINIMUM WIDTH PLATE.
- C. STOP ONLY UNITS ARE PERMITTED ON MANY FIRE DOOR APPLICATIONS. HOWEVER, MECHANICAL HOLD-OPEN DEVICES THAT REQUIRE MANUAL RELEASE ARE NOT PERMITTED FOR USE ON ANY FIRE DOOR AS OUTLINED ON NFPA80 ® OR NFPA101 ® . CONTACT GLYNN-JOHNSON OR YOUR LOCAL REPRESENTATIVE FOR ASSISTANCE.
- D. DEAD STOP (DS) TEMPLATING MAY BE USED ON HOLD-OPEN AND STOP ONLY MODELS. THE DS POSITION IS REACHED WHEN THE SHOCK SPRING IS FULLY COMPRESSED. WHEN DS TEMPLATING IS USED, THE INITIAL DEGREE OF STOP WILL BE 5-7 DEGREES LESS THAN THE DS OPENING. FOR USE ON DOORS OPENING BACK-TO-BACK AGAINST A WALL OR OBSTRUCTION.

| DOOR THICKNESS | HINGE TYPE & STYLE | MOUNTING GROUP |
|----------------|--------------------|----------------|
| 1 3/8" (35) | 3/4" OFFSET PIVOT | 2 |
| 1 3/4" (44) | 4" WIDE BUTT | 2 |
| | 4 1/2" WIDE BUTT | 1 |
| | 5" WIDE BUTT | 1 |
| | 3/4" OFFSET PIVOT | 1 |
| | 4" SWINGCLEAR | 1 |
| | 4 1/2" SWINGCLEAR | 2 |
| | 5" SWINGCLEAR | 2 |
| 2" (51) | CENTERHUNG PIVOT | 3 |
| | 4 1/2" WIDE BUTT | 1 |
| | 5" WIDE BUTT | 1 |
| | 3/4" OFFSET PIVOT | 1 |
| | 4 1/2" SWINGCLEAR | 1 |
| | 5" SWINGCLEAR | 1 |
| 2 1/4" (57) | SOSS 220 | 1 |
| | CENTERHUNG PIVOT | 3 |
| | 4 1/2" WIDE BUTT | 1 |
| | 5" WIDE BUTT | 1 |
| | 3/4" OFFSET PIVOT | 1 |
| | 4 1/2" SWINGCLEAR | 1 |
| 2 1/4" (57) | 5" SWINGCLEAR | 1 |
| | SOSS 220 | 1 |
| | CENTERHUNG PIVOT | 3 |
| | CENTERHUNG PIVOT | 3 |

| SCREW DETAILS | | | |
|---------------|-----|----------------------------|----------------------------|
| | QTY | WOOD | METAL |
| JAMB | 4 | #14 x 1 1/2" FPHSMS | 1/4"-20 x 3/4" FPHMS |
| DOOR (STD) | 2 | 1/4"-20 x 1 1/4" OPHMS | 1/4"-20 x 1 1/4" OPHMS |
| | 2 | 1/4"-20 x 2 1/2" SEX BOLTS | 1/4"-20 x 2 1/2" SEX BOLTS |

81 SERIES SURFACE OVERHEAD
HOLDER INSTALLATION TEMPLATE

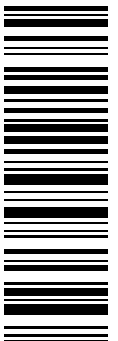


NOTE: DIMENSIONS IN () ARE MILLIMETERS

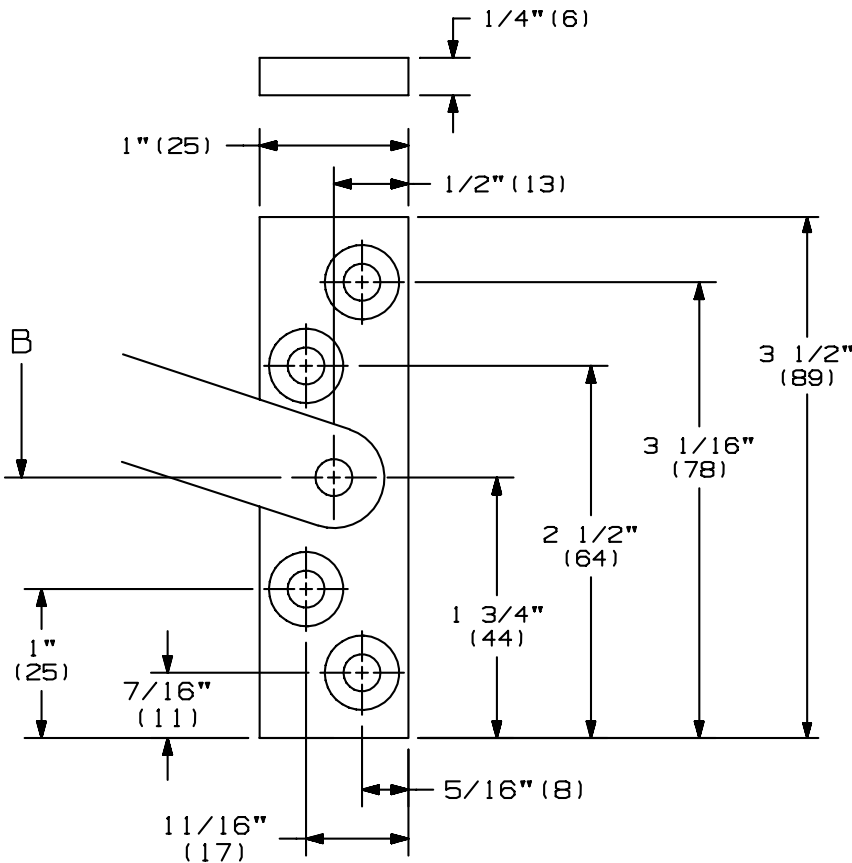
TEMPLATE NUMBER: INST.81.PG1_4

DATE: 04-15-04

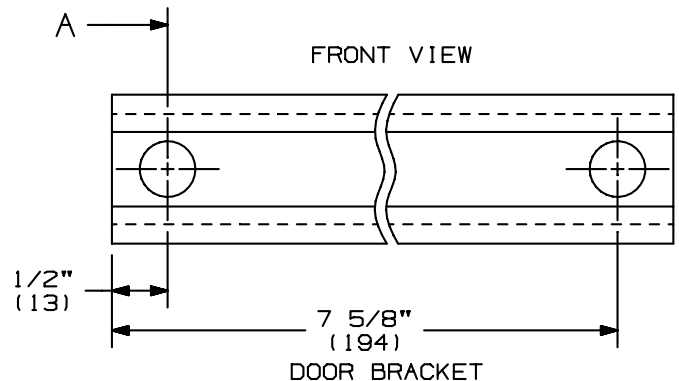
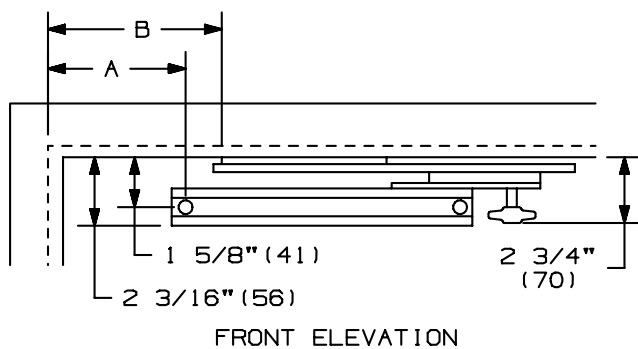
INST.81 (4)



2. A. LOCATE "B" DIMENSION ON THE STOP. NOTE THAT THE "B" DIMENSION IS MEASURED FROM THE CENTERLINE OF THE HINGE AS SHOWN.
- B. FOR METAL FRAMES, USE A #7 DRILL AND A 1/4"-20 TAP IN 4 PLACES. FOR WOOD FRAMES, DRILL A 3/16" PILOT HOLE IN 4 PLACES. MOUNTING HOLES SHOULD BE PREPARED IN THE FIELD.



3. A. LOCATE "A" DIMENSION ON THE DOOR. NOTE THAT THE "A" DIMENSION IS MEASURED FROM THE CENTERLINE OF THE HINGE AS SHOWN.
- B. DRILL THE 3/8" (10) DIAMETER HOLES DOWN 1 5/8" (41) FROM STOP. MOUNTING HOLES SHOULD BE PREPARED IN THE FIELD.



4. A. INSTALL JAMB BRACKET ON THE STOP.
- B. INSTALL THE CHANNEL ON THE DOOR WITH THE SHOCK SPRING TOWARDS THE HINGE EDGE OF THE DOOR.

81 SERIES SURFACE OVERHEAD HOLDER INSTALLATION TEMPLATE

IR GLYNN-JOHNSON®

NOTE: DIMENSIONS IN () ARE MILLIMETERS

TEMPLATE NUMBER: INST.81.PG2_4 DATE: 04-15-04

MOUNTING GROUPS 1 & 2

81 SERIES SURFACE OVERHEAD STOP & HOLDER

CAUTION: "A" & "B" DIMENSIONS ARE MEASURED FROM THE CENTERLINE OF PIVOT, NOT EDGE OF DOOR FOR DEAD STOP ADD 13/16" (21) TO THE "A" DIMENSION HO-HOLD-OPEN FOR HOLDERS, OPENING FOR STOPS

| DIM | DEGREE | 85 HO | | 90 HO | | 95 HO | | 100 HO | | 105 HO | | 110 HO | |
|-----|---------------|-------------------|---------|----------|----------|---------|----------|-------------------|---------|---------|----------|----------|---------|
| | | A | B | A | B | A | B | A | B | A | B | A | B |
| 813 | IN 27 1/16-33 | 9 3/16 | 8 15/16 | 8 5/8 | 8 3/8 | 8 1/8 | 7 7/8 | 7 1/8 | 7 1/2 | 7 3/8 | 7 1/8 | 7 1/16 | 6 13/16 |
| | mm 687-838 | 233 | 227 | 219 | 213 | 206 | 200 | 181 | 191 | 187 | 181 | 179 | 173 |
| 814 | IN 33 1/16-39 | 13 5/16 | 11 9/16 | 12 5/8 | 10 7/8 | 12 | 10 1/4 | 11 1/2 | 9 3/4 | 11 1/16 | 9 5/16 | 10 11/16 | 8 15/16 |
| | mm 839-991 | 338 | 294 | 320 | 276 | 305 | 280 | 292 | 248 | 281 | 237 | 271 | 227 |
| 815 | IN 39 1/16-45 | 17 15/16 | 14 3/8 | 17 1/8 | 13 9/16 | 16 3/8 | 12 13/16 | 15 3/4 | 12 3/16 | 15 1/4 | 11 11/16 | 14 3/4 | 11 3/16 |
| | mm 992-1143 | 460 | 365 | 435 | 344 | 416 | 325 | 400 | 310 | 387 | 297 | 375 | 284 |
| 816 | IN 45 1/16-54 | 20 9/16 | 16 1/16 | 20 5/8 | 15 1/8 | 18 7/8 | 14 3/8 | 18 1/8 | 13 5/8 | 17 1/2 | 13 | 17 1/16 | 12 9/16 |
| | mm 114-1372 | 522 | 408 | 524 | 384 | 479 | 365 | 460 | 346 | 445 | 330 | 433 | 319 |
| 813 | IN 27 1/16-33 | 9 7/16 | 9 3/16 | 8 13/16 | 8 9/16 | 8 7/16 | 8 3/16 | 8 | 7 3/4 | 7 5/8 | 7 3/8 | 7 5/16 | 7 1/16 |
| | mm 687-838 | 240 | 233 | 224 | 217 | 214 | 208 | 203 | 197 | 194 | 187 | 190 | 179 |
| 814 | IN 33 1/16-39 | 13 1/2 | 11 3/4 | 12 3/4 | 11 | 12 3/16 | 10 7/16 | 11 11/16 | 9 15/16 | 11 3/16 | 9 7/16 | 10 13/16 | 9 1/16 |
| | mm 839-991 | 343 | 298 | 324 | 279 | 309 | 265 | 297 | 252 | 284 | 240 | 275 | 230 |
| 815 | IN 39 1/16-45 | 18 1/8 | 14 9/16 | 17 1/4 | 13 11/16 | 16 9/16 | 13 | 15 15/16 | 12 3/8 | 15 3/8 | 11 13/16 | 14 7/8 | 11 5/16 |
| | mm 992-1143 | 460 | 370 | 438 | 348 | 421 | 330 | 405 | 314 | 391 | 300 | 378 | 287 |
| 816 | IN 45 1/16-54 | 20 3/4 | 16 1/4 | 19 13/16 | 15 5/16 | 19 1/16 | 14 9/16 | 18 3/8 | 13 7/8 | 17 3/4 | 13 1/4 | 17 1/4 | 12 3/4 |
| | mm 1144-1372 | 527 | 413 | 503 | 388 | 484 | 370 | 467 | 352 | 451 | 337 | 438 | 324 |
| | | MOUNTING GROUP #1 | | | | | | MOUNTING GROUP #2 | | | | | |

81 SERIES SURFACE OVERHEAD HOLDER INSTALLATION TEMPLATE



NOTE: DIMENSIONS IN () ARE IN MILLIMETERS

TEMPLATE NUMBER: INST . 81 . PG3_4

DATE: 04-15-04

MOUNTING GROUP 3
81 SERIES SURFACE OVERHEAD STOP & HOLDER

CAUTION: "A" & "B" DIMENSIONS ARE MEASURED FROM THE
 CENTERLINE OF PIVOT, NOT EDGE OF DOOR
 FOR DEAD STOP ADD 13/16" (21) TO THE "A" DIMENSION
 HO-HOLD-OPEN FOR HOLDERS, OPENING FOR STOPS

| DIM | DEGREE | 85 HO | | 90 HO | | 95 HO | | 100 HO | | 105 HO | | 110 HO | |
|-----|---------------|---------|----------|--------|---------|---------|----------|---------|----------|---------|---------|---------|----------|
| | | A | B | A | B | A | B | A | B | A | B | A | B |
| 813 | IN 33 1/16-39 | 9 15/16 | 9 11/16 | 9 3/8 | 9 1/16 | 8 13/16 | 8 11/16 | 8 1/2 | 8 1/4 | 7 13/16 | 7 7/8 | 7 13/16 | 7 9/16 |
| | mm 839-991 | 253 | 246 | 240 | 230 | 224 | 221 | 220 | 210 | 206 | 200 | 198 | 192 |
| 814 | IN 39 1/16-45 | 14 | 12 1/4 | 13 1/4 | 11 1/2 | 12 9/16 | 10 13/16 | 12 3/16 | 10 7/16 | 11 3/4 | 10 | 11 3/8 | 9 5/8 |
| | mm 992-1143 | 360 | 311 | 340 | 292 | 319 | 275 | 309 | 265 | 298 | 254 | 290 | 244 |
| 815 | IN 45 1/16-51 | 18 5/8 | 15 1/16 | 17 3/4 | 14 3/16 | 17 1/16 | 13 1/2 | 16 3/8 | 12 13/16 | 15 3/4 | 12 3/16 | 15 3/8 | 11 13/16 |
| | mm 114-1295 | 473 | 383 | 451 | 360 | 433 | 343 | 420 | 325 | 400 | 310 | 390 | 300 |
| 816 | IN 51 1/16-57 | 21 3/16 | 16 11/16 | 20 1/4 | 15 3/4 | 19 7/16 | 14 15/16 | 18 3/4 | 14 1/4 | 18 1/8 | 13 5/8 | 18 3/16 | 13 1/16 |
| | mm 1296-1448 | 540 | 424 | 514 | 400 | 493 | 379 | 476 | 362 | 460 | 346 | 462 | 332 |

MOUNTING GROUP #3

81 SERIES SURFACE OVERHEAD
 HOLDER INSTALLATION TEMPLATE



NOTE: DIMENSIONS IN () ARE IN MILLIMETERS

TEMPLATE NUMBER: INST . 81 . PG4_4

DATE: 04-15-04