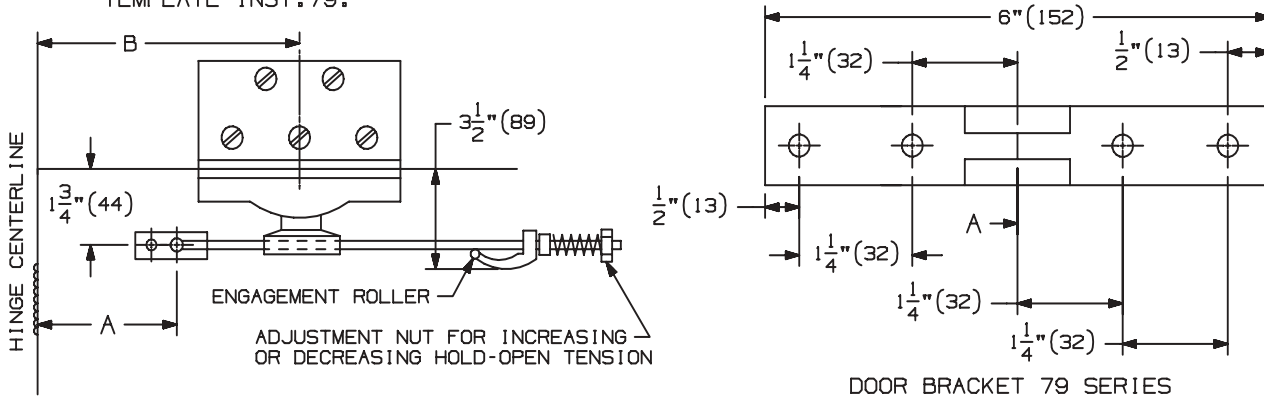
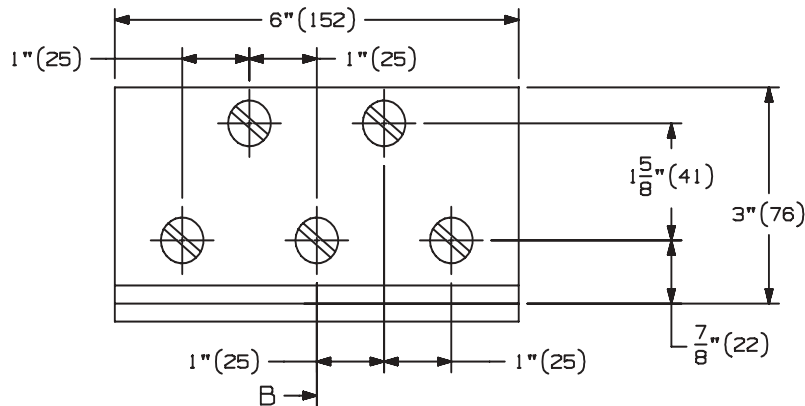


OVERHEAD HOLDERS OR STOPS MUST BE INSTALLED BEFORE CLOSERS.

1. A. FOLLOW STEP 1 FROM THE 79 SERIES SURFACE OVERHEAD HOLDER INSTALLATION TEMPLATE INST.79.



2. A. LOCATE "B" DIMENSION ON THE FACE OF THE FRAME OR ON THE FLUSH TRANSOM PANEL. NOTE THAT THE "B" DIMENSION IS MEASURED FROM THE CENTERLINE OF THE HINGE AS SHOWN.
- B. FOR METAL FRAMES, USE A F DRILL AND 5/16"-18 TAP IN 5 PLACES. FOR WOOD FRAMES, DRILL 1/4" PILOT HOLES IN 5 PLACES. MOUNTING HOLES SHOULD BE PREPARED IN THE FIELD.



3. A. FOLLOW STEP 3 FROM THE 79 SERIES OVERHEAD SURFACE HOLDER INSTALLATION TEMPLATE INST.79
4. A. INSTALL ANGLE BRACKET ONTO STANDARD JAMB BRACKET WITH 5/16"-18 X 1/2" FPHMS PROVIDED WITH THE ANGLE BRACKET.
- B. INSTALL THE DOOR BRACKET ON THE DOOR.
- C. INSTALL THE ANGLE BRACKET TO THE FACE OF THE FRAME OR THE FLUSH TRANSOM PANEL.

SCREW DETAILS

	QTY	WOOD	METAL
ANGLE	4	5/16"-18 X 1/2" FPHMS	5/16"-18 X 1/2" FPHMS
JAMB	4	#18 X 2" FPHSMS	5/16"-18 X 1 1/2" FPHMS
DOOR	4	5/16"-18 X 2 1/2" PPHMS	5/16"-18 X 2 1/2" PPHMS
DOOR	4	5/16"-18 HEX CAP NUT	5/16"-18 HEX CAP NUT
DOOR	4	FLAT WASHER	FLAT WASHER
DOOR	3	SPLIT LOCK WASHER	SPLIT LOCK WASHER

79 SERIES SURFACE OVERHEAD HOLDER ANGLE BRACKET (PUSH SIDE) INSTALLATION TEMPLATE



NOTE: DIMENSIONS IN () ARE IN MILLIMETERS

TEMPLATE NUMBER: INST.79J_1

DATE: 04-15-04

INST.79J ①

