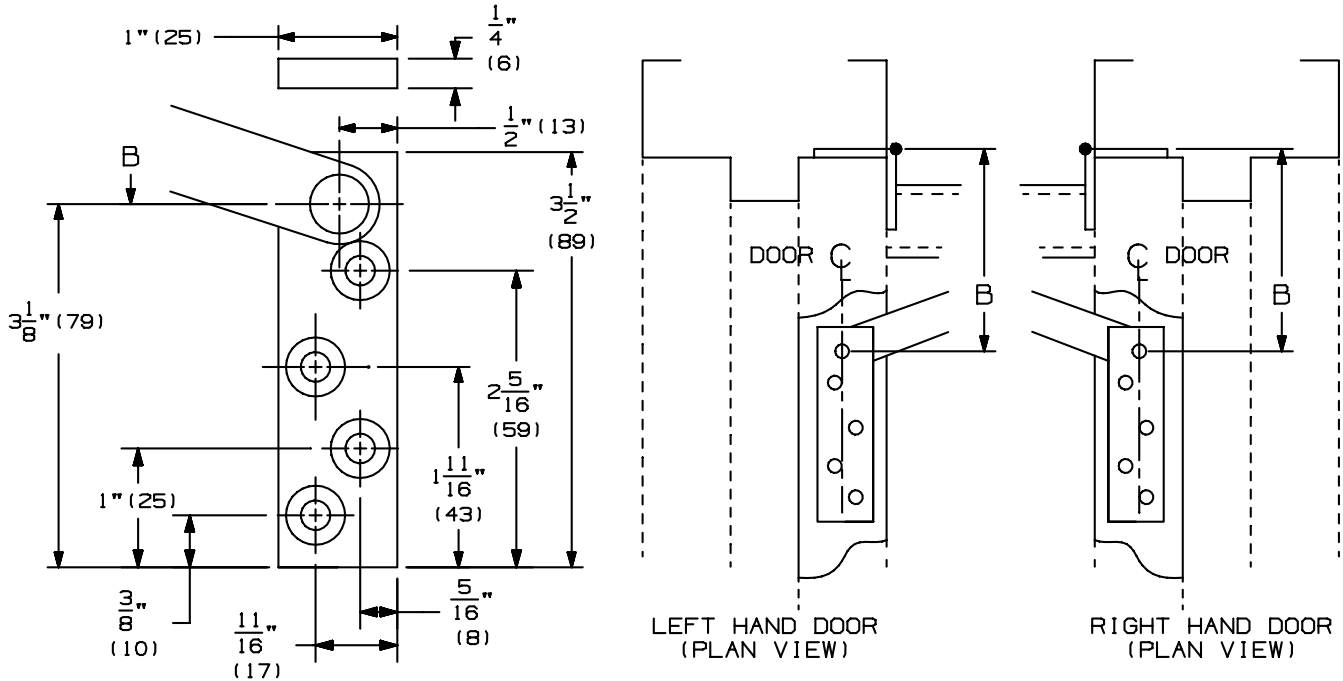
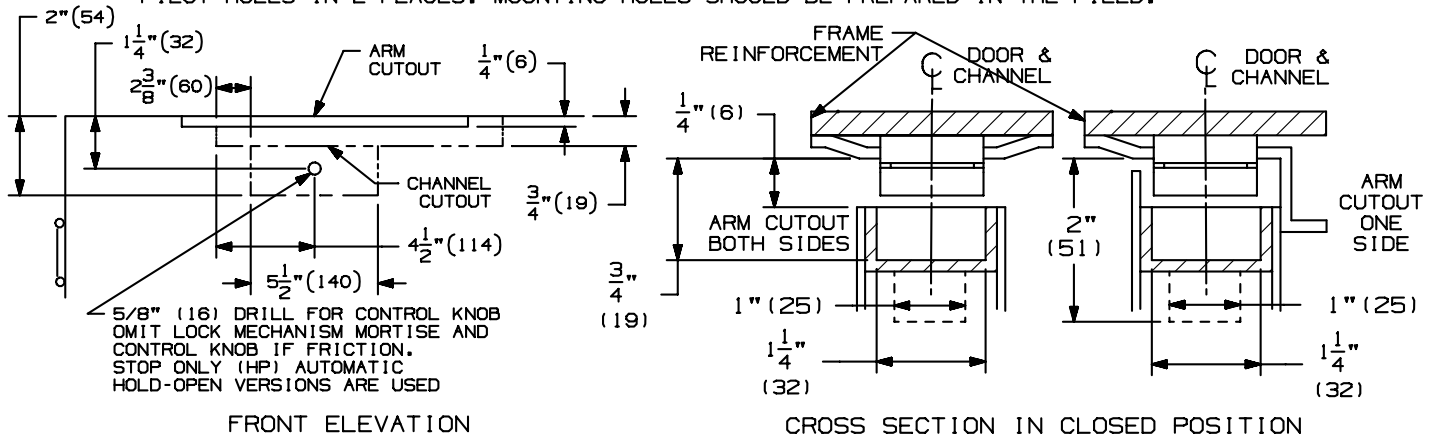


2. A. LOCATE "B" DIMENSION ON THE FRAME. NOTE THAT THE "B" DIMENSION IS MEASURED FROM THE CENTERLINE OF THE HINGE AS SHOWN.
- B. MORTISE FOR THE JAMB BRACKET AS SHOWN. REFER TO LEFT AND RIGHT HAND PLAN VIEWS FOR APPROPRIATE HOLE PATTERN.
- C. FOR METAL FRAMES, USE A #7 DRILL AND A 1/4"-20 TAP IN 4 PLACES. FOR WOOD FRAMES, DRILL 3/16" PILOT HOLE IN 4 PLACES.



REFER TO ILLUSTRATION BELOW AND ON SHT 1 FOR THE FOLLOWING NOTES:

3. A. LOCATE "A" AND "D" DIMENSIONS ON THE CENTERLINE OF THE DOOR. NOTE THAT THE "A" DIMENSION IS MEASURED FROM THE CENTERLINE OF THE HINGE AS SHOWN.
- B. MORTISE FOR THE CHANNEL AS SHOWN IF REQUIRED. FOR 100H HOLD-OPEN VERSION, MORTISE FOR HOLD-OPEN LOCK MECHANISM AND DRILL 5/8" (16) DIAMETER HOLE FOR CONTROL KNOB AS SHOWN. (WHEN HP HOLD-OPEN, F FRICTION OR S STOP UNIT IS SUPPLIED, ADDITIONAL MORTISE FOR HOLD-OPEN MECHANISM AND CONTROL KNOB ARE NOT REQUIRED.)
- C. LOCATE "C" AND "E" DIMENSIONS ON THE TOP OF THE DOOR. NOTE THAT THE "C" DIMENSION IS MEASURED FROM THE CENTERLINE OF THE HINGE AS SHOWN.
- D. MORTISE FOR ARM CUTOUT AS SHOWN.
- E. FOR METAL DOORS, USE A F DRILL AND 5/16-18 TAP IN 2 PLACES. FOR WOOD DOORS, DRILL 1/4" PILOT HOLES IN 2 PLACES. MOUNTING HOLES SHOULD BE PREPARED IN THE FIELD.



4. A. INSTALL THE CHANNEL IN THE DOOR WITH THE SHOCK SPRING TOWARDS THE HINGE EDGE OF DOOR.
- B. INSTALL JAMB BRACKET IN FRAME.
- C. FOR 100H HOLD-OPEN VERSION ONLY, EPOXY (NOT PROVIDED) EYELET IN 5/8" (16) HOLE.
- D. FOR 100H HOLD-OPEN VERSION ONLY, PLACE SERRATED KNOB AND KNOB SPACER OVER CAP SCREW AS SHOWN. THREAD ASSEMBLY THROUGH 5/8" (16) HOLE IN DOOR ONTO LOCK.

100 SERIES CONCEALED OVERHEAD HOLDER INSTALLATION TEMPLATE

IR GLYNN-JOHNSON®

DIMENSIONS IN () ARE IN MILLIMETERS

TEMPLATE NUMBER: INST.100.PG2_4

DATE: 04-15-04

MOUNTING GROUPS 1, 2 & 3 100 SERIES CONCEALED OVERHEAD STOP & HOLDER

CAUTION: "A", "B", & "C" DIMENSIONS ARE MEASURED FROM THE CENTERLINE OF PIVOT, NOT EDGE OF DOOR

D.I.M.	DEGREE	85 HO			90 HO			95 HO			100 HO			105 HO			110 HO								
		A	B	C	A	B	C	A	B	C	A	B	C	A	B	C	A	B	C	E	D	I			
101	IN. 18-23 #1	2 5/16	3 7/16	0	14	2 1/8	3 3/16	0	13 3/4	3	0	13 3/4	-	-	-	-	-	-	-	-	-	-	14 3/8	10	
	mm 457-584 #1	59	87	0	356	52	81	0	349	48	0	349	-	-	-	-	-	-	-	-	-	-	365	254	
102	IN. 23 1/16-27*	4 1/4	4 1/2	2	15 1/2	3 15/16	4 1/8	1 3/4	15 1/2	3 11/16	1 1/2	15 1/2	3 7/16	3 11/16	1 1/4	15 1/2	3 1/2	3 1/2	1	15 1/2	-	-	15 1/2	12	
	mm 585-686 *	108	114	51	394	100	105	44	394	84	38	394	87	94	32	394	83	89	25	394	-	-	394	305	
103	IN. 27 1/16-33	7 15/16	5 5/8	4 1/4	17 7/8	7 9/16	5 1/4	3 7/8	17 7/8	7 1/4	4 15/16	3 9/16	6 15/16	4 5/8	3 1/8	18*	6 11/16	4 7/16	2 15/16	17 7/8	6 1/2	4 3/16	2 11/16	18*	
	mm 687-838	202	143	108	454	192	133	98	454	184	125	90	454	176	79	457	170	113	75	454	165	106	68	457	
104	IN. 33 1/16-39	12 1/8	6 5/8	5 1/4	22	11 11/16	6 1/8	4 3/4	22 1/8	11 5/16	5 13/16	4 7/16	22	11	5 7/16	3 15/16	10 3/4	5 1/8	3 5/8	22 1/4	10 1/2	4 15/16	3 7/16	22 1/4	
	mm 839-991	308	168	133	559	297	156	121	562	287	148	113	559	279	138	100	565	273	130	92	565	267	125	87	
105	IN. 39 1/16-45	18	8 7/16	7 1/16	28 1/8	17 7/16	7 7/8	6 1/2	28 1/8	17	7 7/16	6 1/16	28 1/4	16 3/16	5 1/2	28 1/4	16 3/16	6 9/16	5 1/16	28 1/4	15 7/8	6 5/16	4 13/16	28 1/4	
	mm 982-1143	457	214	179	714	443	200	165	714	432	189	154	714	421	178	140	718	411	167	129	718	403	160	122	
106	IN. 45 1/16-54	24	9 11/16	8 5/16	34 1/8	23 3/8	9	7 5/8	34 1/8	22 3/4	8 1/2	7 1/8	34 1/4	21 7/8	7 9/16	34 1/4	21 7/8	7 9/16	6 1/16	34 1/4	21 1/2	7 3/16	5 11/16	34 1/4	
	mm 1144-1372	610	246	211	867	584	229	184	867	578	216	181	864	587	202	184	895	556	192	154	870	546	183	144	
101	IN. 18-23 #1	2 9/16	3 11/16	0	14 1/2	2 5/16	3 7/16	0	14	2 1/16	3 3/16	0	14	1 15/16	3	0	13 3/4	-	-	-	-	-	-	-	14 3/8
	mm 457-584 #1	65	94	0	368	59	87	0	356	52	81	0	349	49	76	0	349	-	-	-	-	-	-	-	365
102	IN. 23 1/16-27*	4 7/16	4 5/8	2	15 3/4	4 1/8	4 3/8	1 3/4	15 3/4	3 7/8	1 1/2	15 3/4	3 11/16	1 1/4	15 3/4	1 1/4	15 3/4	3 1/2	3 11/16	1	15 3/4	3 5/16	3 1/2	15 3/4	
	mm 585-686 *	113	117	51	400	105	111	44	400	98	103	38	400	94	100	32	400	89	94	25	400	84	89	25	
103	IN. 27 1/16-33	8 1/8	5 13/16	4 7/16	17 7/8	7 3/4	5 7/16	4 1/16	17 7/8	7 7/16	5 1/8	3 3/4	17 7/8	7 7/8	4 13/16	3 5/16	18*	6 15/16	4 9/16	3 1/16	18*	6 11/16	4 3/8	2 7/8	
	mm 687-838	206	148	113	454	197	138	103	454	189	130	95	454	181	122	84	457	178	116	78	457	170	111	73	
104	IN. 33 1/16-39	12 5/16	6 13/16	5 7/16	22	11 7/8	6 5/16	4 15/16	22 1/8	11 1/2	6	4 5/8	22	11 3/16	5 11/16	4 3/16	22 1/8	10 7/8	5 3/8	3 7/8	22 1/8	10 5/8	5 1/8	3 5/8	
	mm 839-991	313	173	138	559	302	160	125	562	292	152	117	559	284	144	106	562	276	137	98	562	270	130	92	
105	IN. 39 1/16-45	18 1/4	8 11/16	7 5/16	28 1/8	17 5/8	8 1/8	6 3/4	28 1/8	17 1/8	7 5/8	6 1/4	28	16 3/4	7 3/16	5 11/16	28 1/4	16 3/8	6 3/4	5 1/4	28 1/4	16	6 1/2	5	
	mm 982-1143	464	221	186	714	448	206	171	711	435	194	159	711	425	183	144	718	416	171	133	718	406	165	127	
106	IN. 45 1/16-54	24 1/4	9 13/16	8 7/16	34 1/4	23 1/2	9 1/4	7 7/8	34 1/4	23	8 9/16	7 3/16	34 1/4	22 1/2	8 1/8	6 5/8	34 1/4	22 1/16	7 11/16	6 3/16	34 1/4	21 11/16	7 5/16	5 13/16	
	mm 1144-1372	676	249	214	870	597	235	200	864	584	217	183	870	572	206	168	870	560	195	157	870	551	186	148	
101	IN. 18-23 #1	-	-	-	-	-	-	-	-	-	-	-	-	-	-	-	-	-	-	-	-	-	-	-	14 3/8
	mm 457-584 #1	-	-	-	-	-	-	-	-	-	-	-	-	-	-	-	-	-	-	-	-	-	-	-	365
102	IN. 23 1/16-27*	-	-	-	-	-	-	-	-	-	-	-	-	-	-	-	-	-	-	-	-	-	-	-	15 1/2
	mm 585-686 *	-	-	-	-	-	-	-	-	-	-	-	-	-	-	-	-	-	-	-	-	-	-	-	394
103	IN. 33 1/16-39	8 7/8	6 5/8	5 1/4	17 3/4	8 1/2	6 1/8	4 3/4	17 7/8	8 1/8	5 7/8	4 1/2	17 3/4	7 3/16	5 1/2	4	18	7 9/16	5 1/4	3 3/4	18	7 5/16	5	3 1/2	
	mm 839-991	225	168	133	451	216	156	121	454	206	147	114	451	198	140	102	457	182	133	95	457	186	127	89	
104	IN. 39 1/16-45	13 3/16	7 5/8	6 1/4	22 1/8	12 1/4	7 1/16	5 11/16	22 1/8	12 1/4	6 11/16	5 5/16	22 1/8	11 7/8	6 3/8	4 7/8	22 1/8	11 9/16	6	4 1/2	22 1/4	11 5/16	5 11/16	4 3/16	
	mm 982-1143	335	194	159	582	322	179	144	582	311	170	135	582	302	162	124	582	284	152	114	585	287	144	106	
105	IN. 45 1/16-51	19 1/16	9 7/16	8 1/16	28 1/8	18 7/16	8 7/8	7 1/2	28 1/8	17 1/2	8 1/4	6 7/8	28 1/4	17 7/16	7 13/16	6 5/16	28 1/4	17 1/16	7 7/16	5 15/16	28 1/4	16 3/4	7 1/16	5 9/16	
	mm 1144-1295	484	240	205	714	468	225	191	714	456	210	175	718	443	198	160	718	433	189	151	718	425	179	141	
106	IN. 51 1/16-57	25 1/16	10 3/4	9 3/8	34 1/8	24 3/8	10	8 5/8	34 1/8	23 3/4	9 3/8	8	34 1/8	23 1/4	8 13/16	7 5/16	34 3/8	22 3/4	8 7/16	6 15/16	34 3/8	22 3/8	7 15/16	6 7/16	
	mm 1298-1448	637	273	238	867	619	254	219	867	603	238	203	867	591	224	186	873	578	214	176	870	568	202	164	

* NOT TO BE USED WITH OFFSET PIVOTS
 † NOT TO BE USED WITH SWINGCLEAR HINGES
 FOR DEAD STOP ADD 9/16" (14) TO THE "A" DIMENSION
 FOR SE STOPS USE HOLD-OPEN MOUNTING DIMENSIONS
 HO-HOLD-OPEN FOR HOLDERS, OPENING FOR STOPS
 I-ARM LENGTH FROM PIVOT CENTERLINE TO PIVOT CENTERLINE
 (FOR REFERENCE ONLY)

100 SERIES CONCEALED OVERHEAD HOLDER INSTALLATION TEMPLATE



NOTE: DIMENSIONS IN () ARE MILLIMETERS.

TEMPLATE NUMBER: INST. 100.PG3_4
 DATE: 04-15-04