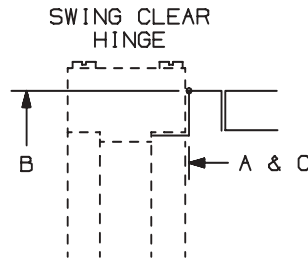
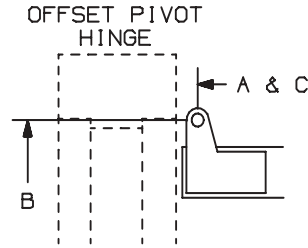
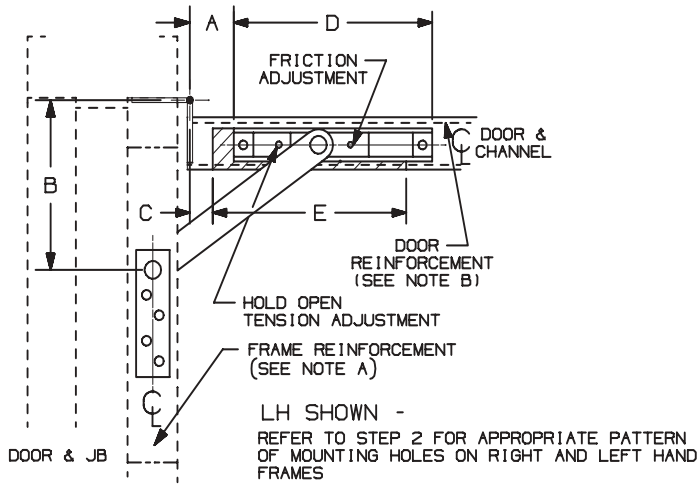


OVERHEAD HOLDERS OR STOPS MUST BE INSTALLED BEFORE CLOSERS

1. A. DETERMINE THE MOUNTING BEING USED FROM ILLUSTRATION BELOW.
- B. USING THE OVERHEAD HOLDER OR STOP SIZE FIND "A", "B", "C", "D", AND "E" DIMENSIONS FROM CHART ON PAGE 4. FOR DEAD STOP ADD 9/16" (14) TO THE "A" DIMENSION FROM THE CHART. SEE NOTE D FOR INFORMATION ABOUT DEAD STOP.



NOTES:

- A. HOLLOW METAL FRAMES SHOULD BE PROPERLY REINFORCED WITH A 3/16" (5) MINIMUM THICKNESS BY 12" (305) MINIMUM LENGTH PLATE.
- B. HOLLOW METAL DOORS SHOULD BE PROPERLY REINFORCED WITH A 3/16" (5) MINIMUM THICKNESS PLATE.
- C. STOP ONLY UNITS ARE PERMITTED ON MANY FIRE DOOR APPLICATIONS. HOWEVER, MECHANICAL HOLD-OPEN DEVICES THAT REQUIRE MANUAL RELEASE ARE NOT PERMITTED FOR USE ON ANY FIRE DOOR AS OUTLINED ON NFPA80 (®) OR NFPA101 (®). CONTACT GLYNN-JOHNSON OR YOUR LOCAL REPRESENTATIVE FOR ASSISTANCE.
- D. DEAD STOP (DS) TEMPLATING MAY BE USED ON HOLD OPEN, FRICTION AND STOP ONLY MODELS, BUT SHOULD NOT BE USED ON "SE" MODELS. THE DS POSITION IS REACHED WHEN THE SHOCK SPRING IS FULLY COMPRESSED. WHEN DS TEMPLATING IS USED, THE INITIAL DEGREE OF STOP WILL BE 5° -7° LESS THAN THE DS OPENING. FOR USE ON DOORS OPENING BACK-TO-BACK, AGAINST A WALL OR OBSTRUCTION.

100 ADJUSTMENTS:

HOLD-OPEN TENSION ADJUSTMENT (HOLD-OPEN UNIT ONLY) - USING A 1/8" BALL END ALLEN WRENCH, TURN SCREW SHOWN IN BOTTOM OF CHANNEL CLOCKWISE TO INCREASE HOLD-OPEN TENSION AND COUNTERCLOCKWISE TO DECREASE HOLD-OPEN TENSION.

FRICTION TENSION ADJUSTMENT (FRICTION UNIT ONLY) - USING A 1/8" ALLEN WRENCH, HOLD SCREW SHOWN IN PLACE WHILE USING A 7/16" WRENCH TO TURN JAMB NUT COUNTERCLOCKWISE UNTIL LOOSE. TURN SCREW CLOCKWISE TO INCREASE FRICTION TENSION AND TURN COUNTERCLOCKWISE TO DECREASE THE FRICTION TENSION. WHILE HOLDING THE SCREW IN PLACE, TURN THE JAMB NUT CLOCKWISE UNTIL TIGHT.

SCREW DETAILS			
	QTY	WOOD	METAL
DOOR	2	#18 x 3" PPHWS	5/16"-18 x 1 1/2" PPHMS
JAMB	4	#14 x 1 1/2" FPHSMS	1/4"-20 x 3/4" FPHMS

100CJ SERIES CONCEALED OVERHEAD HOLDER INSTALLATION TEMPLATE

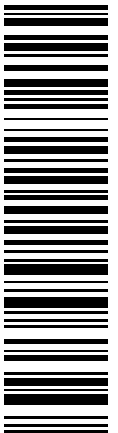


DIMENSIONS IN () ARE IN MILLIMETERS

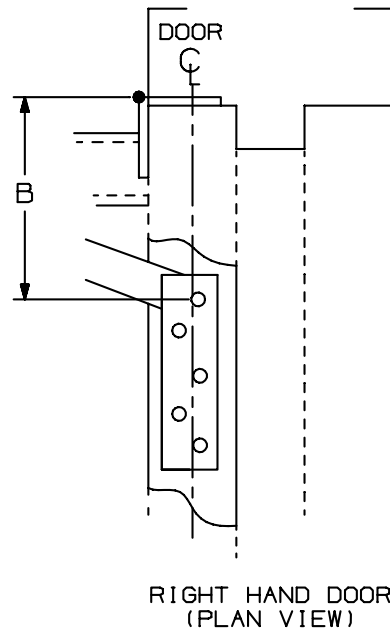
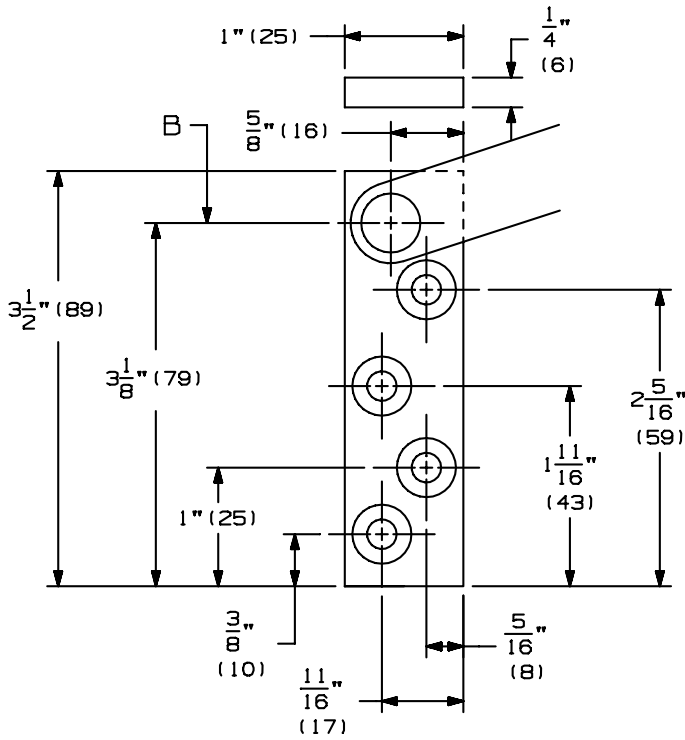
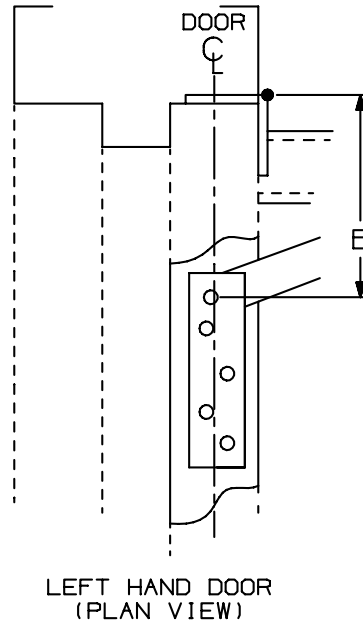
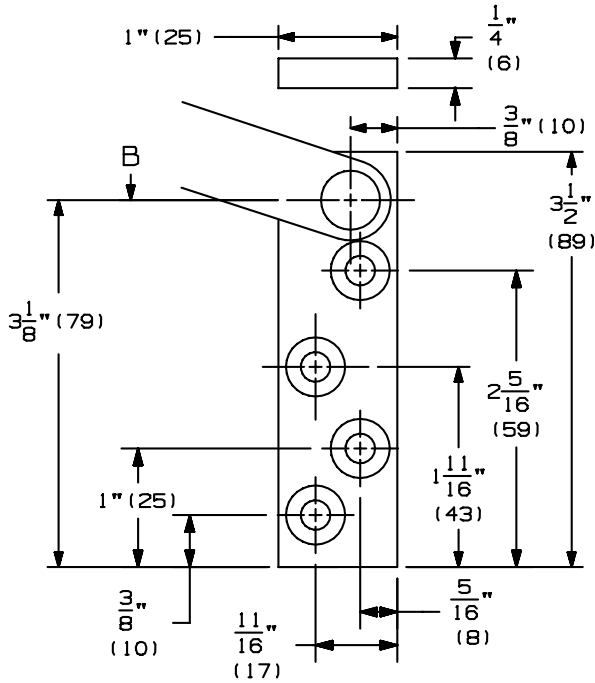
TEMPLATE NUMBER: INST.100CJ.PG1_4

DATE: 04-15-04

INST.100CJ (4)



2. A. LOCATE "B" DIMENSION ON THE FRAME. NOTE THAT THE "B" DIMENSION IS MEASURED FROM THE CENTERLINE OF THE HINGE AS SHOWN.
- B. MORTISE FOR THE JAMB BRACKET AS SHOWN. REFER TO LEFT AND RIGHT HAND PLAN VIEWS FOR APPROPRIATE HOLE PATTERN.
- C. FOR METAL FRAMES, USE A #7 DRILL AND A 1/4"-20 TAP IN 4 PLACES. FOR WOOD FRAMES, DRILL 3/16" PILOT HOLE IN 4 PLACES.



100CJ SERIES CONCEALED OVERHEAD
HOLDER INSTALLATION TEMPLATE



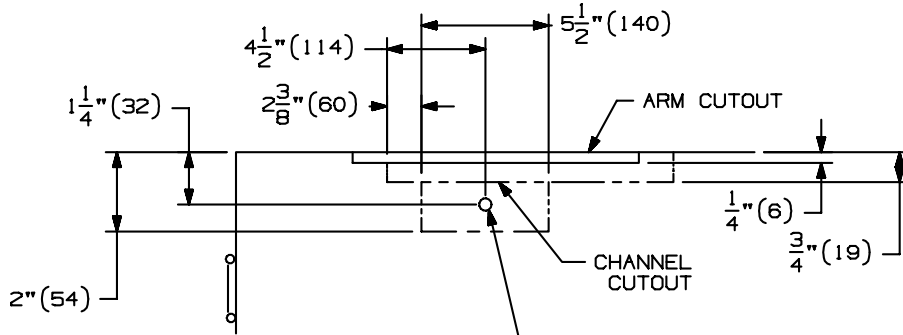
DIMENSIONS IN () ARE IN MILLIMETERS

TEMPLATE NUMBER: INST. 100CJ.PG2_4

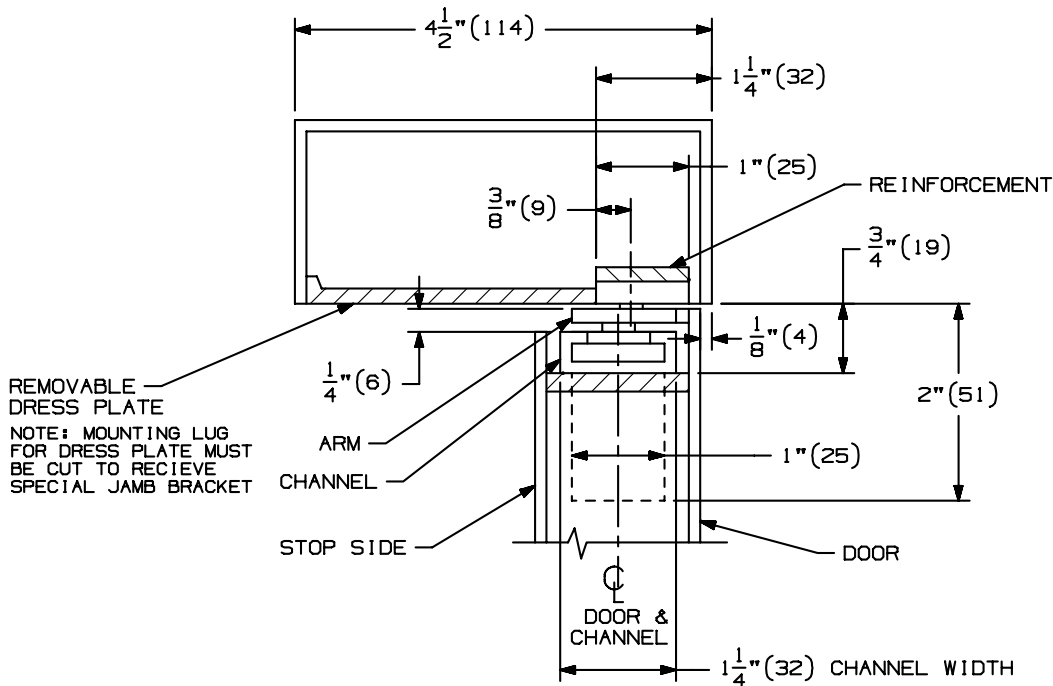
DATE: 04-15-04

REFER TO ILLUSTRATION BELOW AND ON SHT 1 FOR THE FOLLOWING NOTES:

3. A. LOCATE "A" AND "D" DIMENSIONS ON THE CENTERLINE OF THE DOOR. NOTE THAT THE "A" DIMENSION IS MEASURED FROM THE CENTERLINE OF THE HINGE AS SHOWN.
- B. MORTISE FOR THE CHANNEL AS SHOWN IF REQUIRED. FOR 100H HOLD-OPEN VERSION, MORTISE FOR HOLD-OPEN LOCK MECHANISM AND DRILL 5/8" (16) DIAMETER HOLE FOR CONTROL KNOB AS SHOWN. (WHEN HP HOLD-OPEN, F FRICTION OR S STOP UNIT IS SUPPLIED, ADDITIONAL MORTISE FOR HOLD-OPEN MECHANISM AND CONTROL KNOB ARE NOT REQUIRED.)
- C. LOCATE "C" AND "E" DIMENSIONS ON THE TOP OF THE DOOR. NOTE THAT THE "C" DIMENSION IS MEASURED FROM THE CENTERLINE OF THE HINGE AS SHOWN.
- D. MORTISE FOR ARM CUTOUT AS SHOWN.
- E. FOR METAL DOORS, USE A F DRILL AND 5/16-18 TAP IN 2 PLACES. FOR WOOD DOORS, DRILL 1/4" PILOT HOLES IN 2 PLACES. MOUNTING HOLES SHOULD BE PREPARED IN THE FIELD.



5/8" (16) DRILL FOR CONTROL KNOB. OMIT LOCK MECHANISM MORTISE AND CONTROL KNOB HOLE IF FRICTION, STOP ONLY OR (HP) AUTOMATIC HOLD-OPEN VERSIONS ARE USED.



4. A. INSTALL THE CHANNEL IN THE DOOR WITH THE SHOCK SPRING TOWARDS THE HINGE EDGE OF DOOR.
- B. INSTALL JAMB BRACKET IN FRAME.
- C. FOR 100H HOLD-OPEN VERSION ONLY, EPOXY (NOT PROVIDED) EYELET IN 5/8" (16) HOLE.
- D. FOR 100H HOLD-OPEN VERSION ONLY, PLACE SERRATED KNOB AND KNOB SPACER OVER CAP SCREW AS SHOWN. THREAD ASSEMBLY THROUGH 5/8" (16) HOLE IN DOOR ONTO LOCK.

100CJ SERIES CONCEALED OVERHEAD HOLDER INSTALLATION TEMPLATE



DIMENSIONS IN () ARE IN MILLIMETERS

TEMPLATE NUMBER: INST. 100CJ.PG3_4

DATE: 04-15-04

100CJ SERIES CONCEALED OVERHEAD STOP & HOLDER

CAUTION: "A", "B", & "C" DIMENSIONS ARE MEASURED FROM THE CENTERLINE OF PIVOT, NOT EDGE OF DOOR

FOR DEAD STOP ADD 9/16" (14) TO THE "A" DIMENSION

FOR SE STOPS USE HOLD-OPEN MOUNTING DIMENSIONS

HO=HOLD-OPEN FOR HOLDERS, OPENING FOR STOPS

I=ARM LENGTH FROM PIVOT CENTERLINE TO PIVOT CENTERLINE

(FOR REFERENCE ONLY)

		DEGREE	90 HO						
	DIM.	DOOR OPENING	A	B	C	E	D	I	
104	IN.	33 1/16-39	11 7/8	6 5/16	4 15/16	22 1/8	17 3/4	20	
	mm	839-991	302	160	125	562	451	508	
105	IN.	39 1/16-45	17 5/8	8 1/8	6 3/4	28	19 3/4	26	
	mm	992-1143	448	206	171	711	502	660	
106	IN.	45 1/16-54	23 1/2	9 1/4	7 7/8	34	21 1/4	32	
	mm	1144-1372	597	235	200	864	533	813	

100CJ SERIES CONCEALED OVERHEAD
HOLDER INSTALLATION TEMPLATE



TEMPLATE NUMBER: INST.100CJ.PG4_4

DATE: 04-15-04