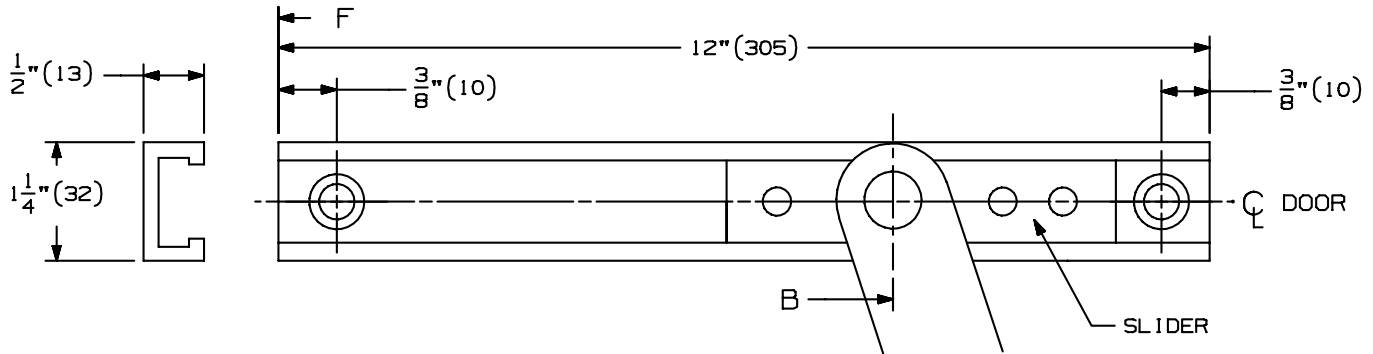
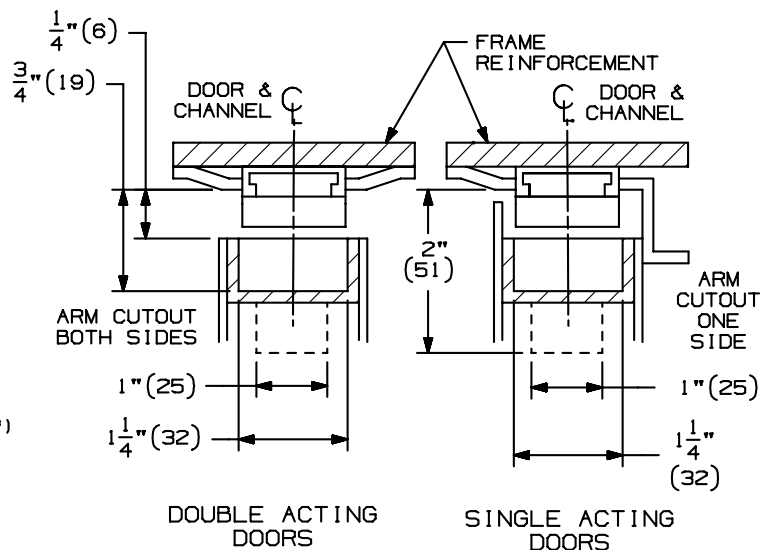
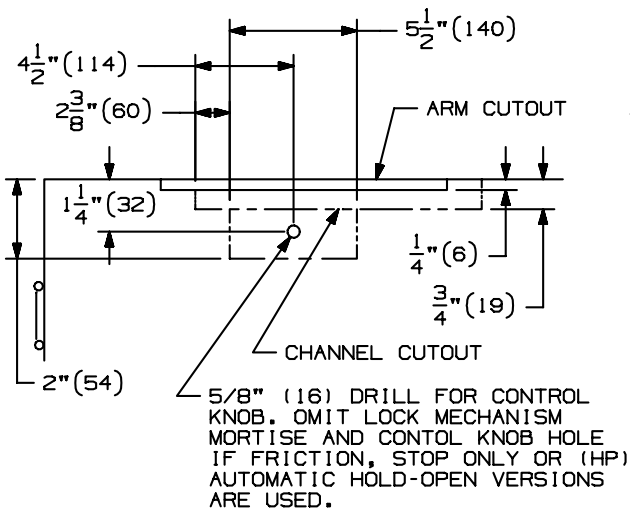


2. A. LOCATE "F" AND "L" DIMENSIONS ON THE FRAME. NOTE THAT THE "F" DIMENSION IS MEASURED FROM THE CENTERLINE OF THE HINGE AS SHOWN.
- B. MORTISE FOR THE JAMB BRACKET TRACT AS SHOWN.
- C. FOR METAL FRAMES, USE A #7 DRILL AND A 1/4"-20 TAP IN 2 PLACES. FOR WOOD FRAMES, DRILL 3/16" PILOT HOLE IN 2 PLACES.



REFER TO ILLUSTRATION BELOW AND ON SHT 1 FOR THE FOLLOWING NOTES:

3. A. LOCATE "A" AND "D" DIMENSIONS ON THE CENTERLINE OF THE DOOR. NOTE THAT THE "A" DIMENSION IS MEASURED FROM THE CENTERLINE OF THE HINGE AS SHOWN.
- B. MORTISE FOR THE CHANNEL AS SHOWN IF REQUIRED. FOR 100H HOLD-OPEN VERSION, MORTISE FOR HOLD-OPEN LOCK MECHANISM AND DRILL 5/8" (16) DIAMETER HOLE FOR CONTROL KNOB AS SHOWN. (WHEN HP HOLD-OPEN, F FRICTION OR S STOP UNIT IS SUPPLIED, ADDITIONAL MORTISE FOR HOLD-OPEN MECHANISM AND CONTROL KNOB HOLE ARE NOT REQUIRED.)
- C. LOCATE "C" AND "E" DIMENSIONS ON THE TOP OF THE DOOR. NOTE THAT THE "C" DIMENSION IS MEASURED FROM THE CENTERLINE OF THE HINGE AS SHOWN.
- D. MORTISE FOR ARM CUTOUT AS SHOWN.
- E. FOR METAL DOORS, USE A F DRILL AND 5/16-18 TAP IN 2 PLACES. FOR WOOD DOORS, DRILL 1/4" PILOT HOLES IN 2 PLACES. MOUNTING HOLES SHOULD BE PREPARED IN THE FIELD.



4. A. INSTALL THE CHANNEL IN THE DOOR WITH THE SHOCK SPRING TOWARDS THE HINGE EDGE OF DOOR.
- B. INSTALL JAMB BRACKET TRACT IN FRAME.
- C. FOR 100H HOLD-OPEN VERSION ONLY, EPOXY (NOT PROVIDED) EYELET IN 5/8" (16) HOLE.
- D. FOR 100H HOLD-OPEN VERSION ONLY, PLACE SERRATED KNOB AND KNOB SPACER OVER CAP SCREW AS SHOWN. THREAD ASSEMBLY THROUGH 5/8" (16) HOLE IN DOOR ONTO LOCK MECHANISM.
- E. ADJUST THE SLIDER IN THE JAMB BRACKET TRACT TO THE DESIRED DEGREE OF OPENING ("B" DIMENSION) AND TIGHTEN THE SET SCREWS.

100ADJ SERIES CONCEALED OVERHEAD HOLDER INSTALLATION TEMPLATE

IR GLYNN-JOHNSON®

DIMENSIONS IN () ARE IN MILLIMETERS

TEMPLATE NUMBER: INST.100ADJ.PG2_4

DATE: 04-15-04

MOUNTING GROUPS 1, 2 & 3 100ADJ SERIES CONCEALED OVERHEAD STOP & HOLDER

CAUTION: "A", "B", "C" & "F" DIMENSIONS ARE MEASURED FROM THE CENTERLINE OF PIVOT, NOT EDGE OF DOOR

FOR DEAD STOP ADD 9/16" (14) TO THE "A" DIMENSION * NOT TO BE USED WITH OFFSET PIVOTS
 HO-HOLD-OPEN FOR HOLDERS, OPENING FOR STOPS
 I=ARM LENGTH FROM PIVOT CENTERLINE TO PIVOT CENTERLINE
 (FOR REFERENCE ONLY)

DEGREE	B (REFERENCE ONLY)														I
	A	85 HO	90 HO	95 HO	100 HO	105 HO	110 HO	C	D	E	F	L	I		
103	27 1/16-33*	3 3/8	9 9/16	8 7/16	7 3/8	6 7/16	5 11/16	5	7/8	22 1/2	2 3/4	12	13		
	mm	86	243	214	187	164	144	127	22	572	70	305	330		
104	33 1/16-39	5 5/8	12 1/4	10 15/16	9 3/4	8 11/16	7 3/4	7	3 1/8	26 5/16	4 3/4	12	16 1/4		
	mm	143	311	278	248	221	197	178	79	668	121	305	413		
105	39 1/16-45	9 3/8	13 11/16	12	10 1/2	9 3/16	8 1/16	7 1/8	6 7/8	28	4 1/4	12	20		
	mm	238	348	305	267	233	205	181	175	711	108	305	508		
106	45 1/16-54	12	15 7/16	13 1/2	11 3/4	10 1/4	9	8	9 1/2	30 1/2	5 7/8	12	23		
	mm	305	392	343	298	260	229	203	241	775	149	305	584		
103	27 1/16-33*	3 1/2	9 1/2	8 7/16	7 7/16	6 9/16	5 13/16	5 3/16	1	22 1/2	2 3/4	12	13		
	mm	89	241	214	189	167	148	132	25	572	70	305	330		
104	33 1/16-39	5 5/8	12 5/16	11 1/16	9 15/16	8 7/8	8	7 1/4	3 1/8	26 5/16	4 3/4	12	16 1/4		
	mm	143	313	281	252	225	203	184	79	668	121	305	413		
105	39 1/16-45	9 1/2	13 11/16	12	10 9/16	9 1/4	8 3/16	7 1/4	7	28	4 1/4	12	20		
	mm	241	348	305	268	235	208	184	178	711	108	305	508		
106	45 1/16-54	12 3/4	14 3/8	12 11/16	10 5/8	9 3/16	7 15/16	7	10 1/4	30 1/2	4 7/8	12	23		
	mm	324	365	322	270	233	202	178	260	775	124	305	584		
103	33 1/16-39	4 1/2	8 5/8	7 5/8	6 13/16	6 1/16	-	-	2	22 1/2	3 3/8	12	13		
	mm	114	219	194	173	154	-	-	51	572	98	305	330		
104	39 1/16-45	7 1/8	10 13/16	9 9/16	8 1/2	7 9/16	6 3/4	6 1/16	4 5/8	26 5/16	4	12	16 1/4		
	mm	181	275	243	216	192	171	154	117	668	102	305	413		
105	45 1/16-51	10 1/2	12 13/16	11 1/4	9 15/16	8 3/4	7 13/16	7	8	28	4	12	20		
	mm	267	325	286	252	222	198	178	203	711	102	305	508		
106	51 1/16-57	13	14 11/16	12 15/16	11 3/8	10 1/16	8 15/16	8	10 1/2	30 1/2	5 1/2	12	23		
	mm	330	373	329	289	256	227	203	267	775	140	305	584		

100ADJ SERIES CONCEALED OVERHEAD HOLDER INSTALLATION TEMPLATE



DIMENSIONS IN () ARE MILLIMETERS.

TEMPLATE NUMBER: INST. 100ADJ.PG3_4

DATE: 04-15-04